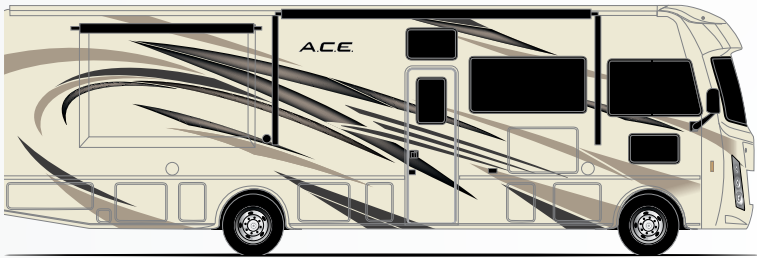


A.C.E.®



BRANDYWINE **HD**



VINEYARD **HD**



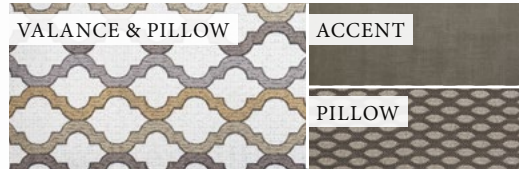
Coach LINK®

Thinking about buying a new coach? Have a question about one of our motorhomes? Trying to find a dealer near you?

Our Coach Link® support team is here to help you in your purchase of a new motorhome! This dynamic team focuses directly on helping you find the answers you need to get you behind the wheel of one of our great new motorhomes. Call 800.860.5658 or visit us online at thormotorcoach.com.



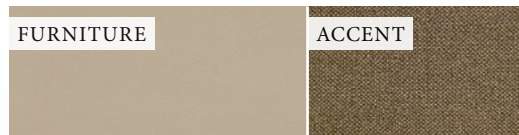
ARCTIC FROST II



FRENCH QUARTERS



ISLAND NIGHTS



COUNTERTOPS

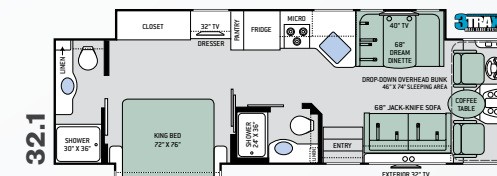
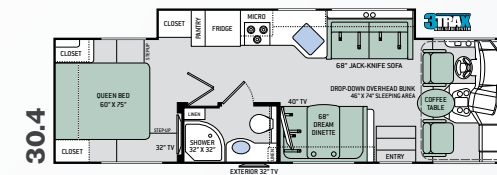
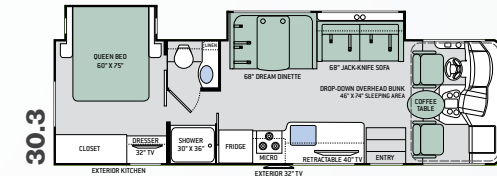
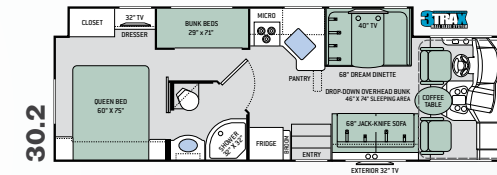
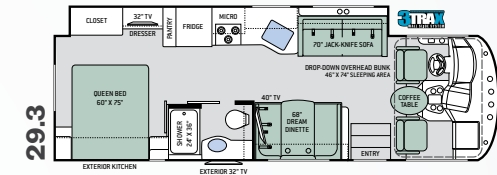
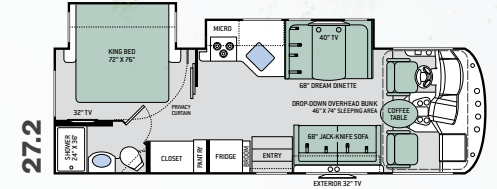


FLOORING



BRAZILIAN CHERRY

MALIBU MAPLE



Featured Highlights

CONSTRUCTION & EXTERIOR

- Ford® F-53 Chassis - 6.8L Triton® V10 Engine, 320HP, 460 lb.-ft. Torque - TorqShift® 6-Speed Automatic Transmission with Overdrive
- One-Piece Fiberglass Front Cap
- One-Piece Windshield
- Welded Tubular Steel Floor
- Welded Tubular Aluminum Roof & Sidewall Cage Construction
- Vacu-Bond Laminated Roof, Walls & Floor with Block Foam Insulation
- Premium One-Piece TPO Roof
- HD-MAX® Exterior with Graphics Package
- Automatic Leveling Jacks with Touchpad Controls
- Side-Hinged Flush Mount Radius Compartment Doors
- Rotocast Storage Compartments
- MEGA-Storage™ Compartment (30.4)
- Pet-Link™ Multi-Purpose Tie-Down
- Power Patio Awning with Integrated LED Lighting
- 3TRAX® Wall Slide System (29.3, 30.2, 30.4 & 32.1)
- Slideout Room Topper Awning(s)
- Frameless Windows
- Motorhome Mudroom™ Compartment
- Electric Entry Step
- Roof Ladder
- 8,000-lb. Trailer Hitch with 7-pin Round Connector

AUTOMOTIVE & COCKPIT

- 10" Touchscreen AM/FM Dash Radio with Bluetooth®
- Back-Up Monitor
- Heated/Remote Exterior Mirrors with Integrated Side View Cameras
- Reclining/Swivel Leatherette Captain's Chairs with Stow-Away Coffee Table
- Emergency Engine Start Switch
- Windshield Privacy Shade
- Conversation Mirrors
- Cruise Control
- Tilt Steering Wheel
- Map Lights
- Bird's Eye™ Window
- Valve Stem Extenders on Rear Wheels
- 19.5" Tires with Stainless Steel Wheel Liners
- Dash Workstation with 110-volt & 12-volt Outlets
- Power Drop Down Hide-Away Overhead Bunk with Bunk Ladder

INTERIOR

- Rubber Tread Entry Steps with Lighted Step Well & Utility Storage
- Residential Vinyl Flooring
- 84" Interior Ceiling Height
- LED Lighting
- Ceiling Ducted Air Conditioning System
- Flat Panel Cabinet Doors with Nickel Finish Hardware

- Full Extension Ball-Bearing Metal Drawer Guides
- Leatherette Sofa Bed
- Leatherette Dream Dinette® with Cup Holders
- Window Privacy Shades
- 12-volt Attic Fan with Cover in Living Area

INTERIOR OPTION

- Single Child Safety Tether in Dream Dinette®

KITCHEN

- Double Door Refrigerator
- 3-Burner Gas Cooktop/Oven with Bi-Fold Glass Cover
- Microwave Oven
- Laminate Countertops
- Glass Tile Backsplash
- Oversized Stainless Steel Single Bowl Sink & Single Handle Faucet w/Pull-Down Sprayer
- Pantry (27.2, 29.3, 30.2, 30.4 & 32.1)
- Coat/Broom Closet with Hanging Hooks (27.2 & 30.2)
- Waste & Recycling Containers

BEDROOM & BATHROOM

- Denver Mattress® King Size Bed (27.2 & 32.1)
- Denver Mattress® Queen Size Bed (29.3, 30.2, 30.3 & 30.4)
- Dedicated CPAP Outlet and Storage Location
- Designer Headboard, Bedspread & Pillow Shams

- Bunk Beds w/Bunk Ladder (30.2)
- 12-volt Attic Fan with Cover in Bedroom
- Pull-Out Kibble Station™ with FDA Approved Pet Bowl Liner
- Foot Flush Porcelain Toilet
- Shower with Curved Rod and Anti-Microbial Curtain (27.2, 29.3, 30.3 & 32.1)
- Shower with Glass Door (30.2 & 30.4)

ENTERTAINMENT

- 40" TV in Living Area (27.2, 29.3, 30.2, 30.4 & 32.1)
- Retractable 40" TV in Living Area (30.3)
- Blu-Ray Player in Living Area
- 32" TV in Bedroom
- Two (2) 15.5" TVs & DVD Player in Bunk Bed Area (30.2)
- Power Charging Center for Electronics
- Cable TV Ready
- Digital TV Antenna
- Exterior 32" TV on Manual Swivel with Sound Bar & Radio
- Exterior Kitchen with Refrigerator, Sink & 1000-watt Inverter (29.3 & 30.3)
- Exterior LP Connection

ELECTRICAL & PLUMBING

- Onan® RV QG 4000 Gas Generator
- 30-amp Detachable Shoreline Power Cord
- 15,000 BTU Roof Air Conditioner

- Solar Charge Controller - Solar Panel Ready
- Second Auxiliary House Battery
- Battery Disconnect Switch
- 6-gallon DSI Gas/Electric Water Heater (27.2, 29.3, 30.2, 30.3 & 30.4)
- 10-gallon DSI Gas/Electric Water Heater (32.1)
- 360° Siphon RV Holding Tank Vent Cap
- 1" Fresh Water Tank Drain
- Black Tank Flush System
- Water Heater Bypass System
- Enclosed & Heated Holding Tanks (27.2 & 30.3)
- Enclosed Holding Tanks with Heat Pads (29.3, 30.2, 30.4 & 32.1)
- Outside Shower
- Systems Control Center

ELECTRICAL & PLUMBING OPTION

- 50-amp Detachable Shoreline Power Cord, Dual 13,500 BTU Roof Air Conditioners, and Onan® RV QG 5500 Gas Generator (29.3, 30.2, 30.3, 30.4 & 32.1)

For a complete listing of available features, visit thormotorcoach.com/ace.

	27.2	29.3	30.2	30.3	30.4	32.1
Chassis	Ford	Ford	Ford	Ford	Ford	Ford
Gross Vehicle (GVWR)	16,000	18,000	18,000	18,000	18,000	20,500
Gross Combined (GCWR)	23,000	23,000	23,000	23,000	23,000	26,000
Wheel Base	178"	190"	190"	190"	208"	208"
Exterior Length (w/o ladder)	28'-9"	29'-9"	31'-6"	31'	31'-6"	33'-6"
Exterior Height (w/AC)	12'-2"	12'-2"	12'-2"	12'-2"	12'-2"	12'-2"
Exterior Width (w/o mirrors)	99"	99"	99"	99"	99"	99"
Interior Height (living area)	84"	84"	84"	84"	84"	84"
Awning Size	19'	18'	19'	19'	16'	14'
Fuel (gal)	80	80	80	80	80	80
LPG (lbs)	88	88	88	88	88	88
Fresh/Waste/Gray Water (gal)	50 / 40 / 33F-40R	50 / 26 / 47	50 / 28 / 40	50 / 40 / 40	50 / 40 / 47	50 / 67 / 86
Water Heater (gal)	6	6	6	6	6	10
Furnace (BTUs)	30,000	35,000	35,000	35,000	35,000	35,000
Exterior Storage Capacity (cu. ft.)	56	48	107	72	130	83
Hitch Weight Rating (lbs)	8,000	8,000	8,000	8,000	8,000	8,000



Made to fit.

P.O. Box 1486, Elkhart, IN 46515 Sales Department: 800.860.5658

thormotorcoach.com/ace



IMPORTANT—PLEASE READ: This brochure reflects product design, fabrication, material, components and specifications at the date of printing, which date is disclosed below. Please visit us online at ThorMotorCoach.com or consult with your selling dealership for the latest in standards, options, specification and technical information. Photographs in the brochure may depict optional equipment or may only be available in certain floor plans. Components, appliances and the chassis may have been manufactured in a calendar year before the vehicle's designated model year. All capacities are approximate. The actual length of the vehicle may differ from that indicated in the brochure due to variances in the manufacturing processes and/or installed components. All dry weights are based on standard model features and do not include optional features or equipment. Component part and appliance manufacturers issue limited warranties covering portions of the vehicle not covered under the limited warranty we issue. Copyright Thor Motor Coach, Inc. © MY 04/13/2018